

Fosforhalten (i mg/g) i löv hos 130 slumpvis utvalda björkar i en skog uppmättes:

8.82 8.56 9.01 8.61 8.75 8.65 8.29 9.00 8.85
8.85 8.55 8.80 8.48 8.84 8.36 8.60 9.03 8.57
9.12 8.92 8.86 8.66 8.78 8.83 8.58 8.96 8.48
8.62 8.55 8.56 8.34 8.90 8.42 8.75 9.02 8.68
8.61 8.54 8.48 8.81 8.82 8.71 8.34 8.95 8.97
8.47 8.70 8.82 8.67 8.20 8.97 8.77 8.39 8.69
8.69 8.74 9.16 8.78 8.97 8.68 8.41 8.30 9.02
9.07 9.10 8.26 8.46 9.05 8.82 8.75 8.46 8.85
8.84 8.77 8.36 8.97 8.77 9.03 8.37 9.16 8.66
8.83 8.50 8.39 8.70 8.86 8.34 9.08 8.87 8.48
8.77 9.13 8.98 8.94 8.99 8.29 8.61 8.71 8.74
8.77 8.97 8.49 8.33 8.90 8.93 8.76 8.36 8.89
8.74 8.70 8.77 8.41 8.36 8.63 8.58 8.70 8.86
9.08 8.64 8.66 8.82 8.81 8.61 8.88 8.65 8.92
8.89 8.97 8.88 9.20

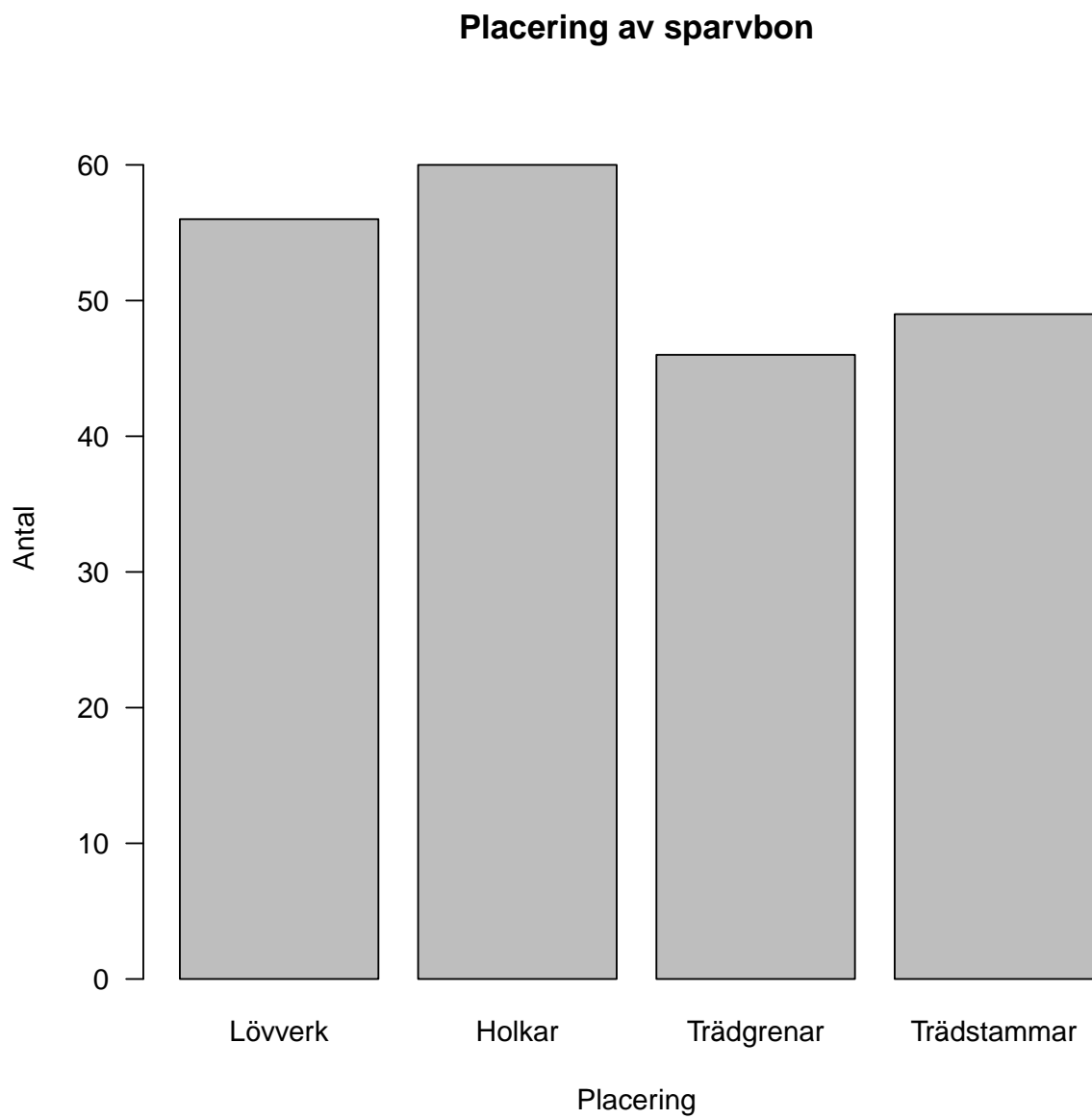
Vad kan vi säga om fosforhalten i björklöv i denna skog?

Frekvenstabell, nominalskala

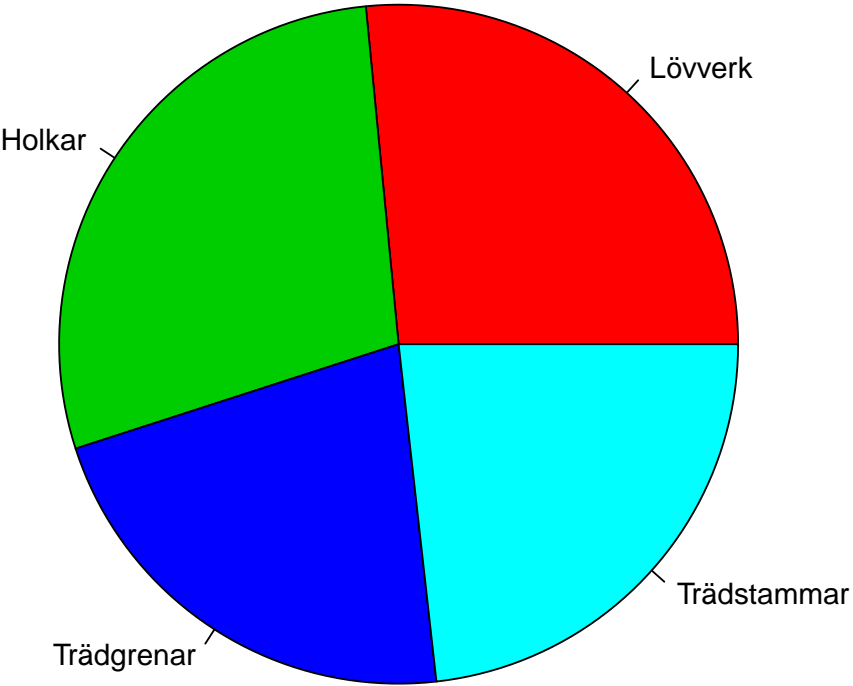
Placeringen av 211 sparvbon observerades.

| Placering | Antal | Frekvens |
|-------------|-------|----------|
| Lövverk | 56 | 27 % |
| Holkar | 60 | 28 % |
| Trädgrenar | 46 | 22 % |
| Trädstammar | 49 | 23 % |
| Summa | 211 | 100 % |

Stapeldiagram, nominalskala



Cirkeldiagram, nominalskala

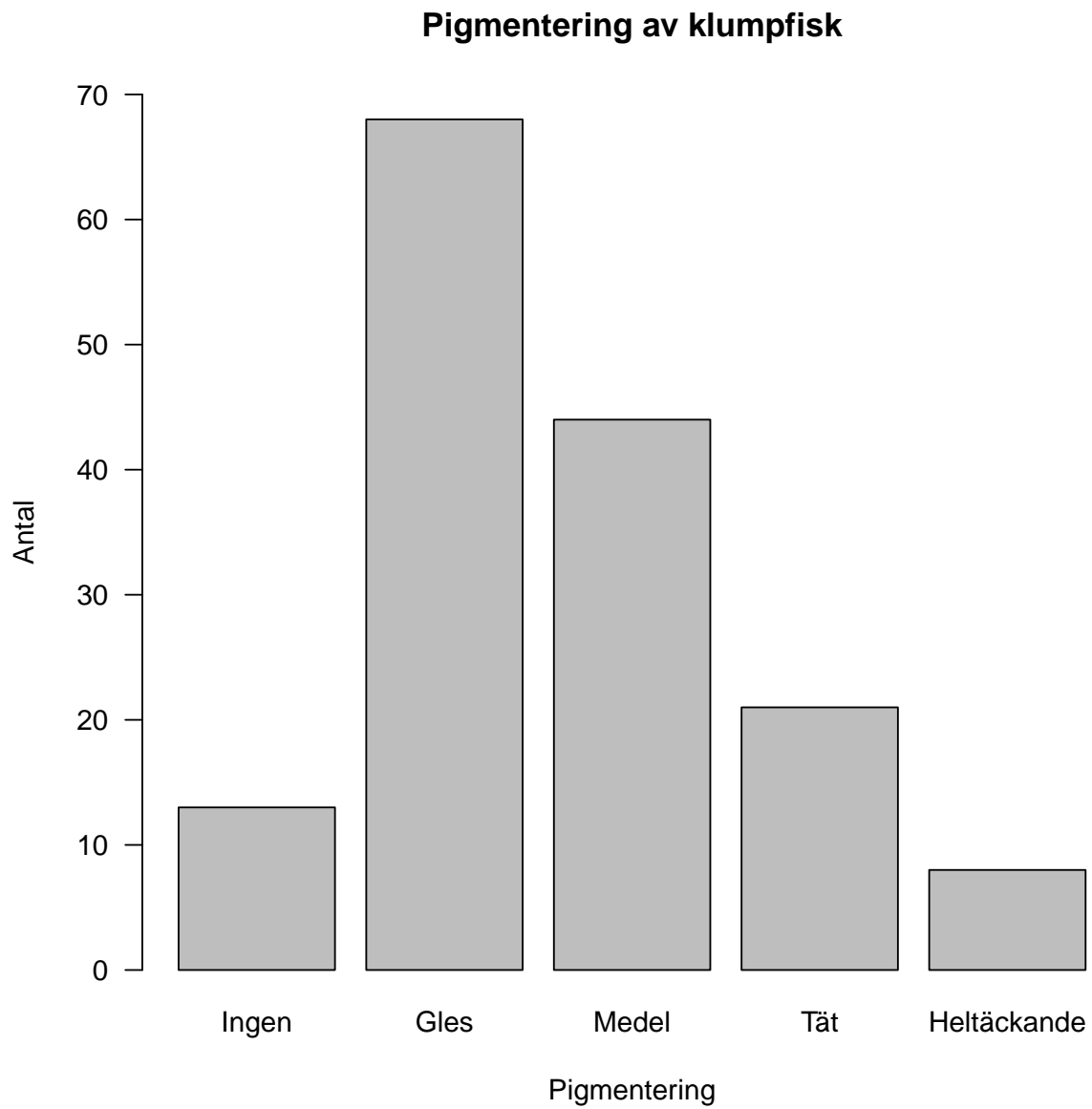


Frekvenstabell, ordinalskala

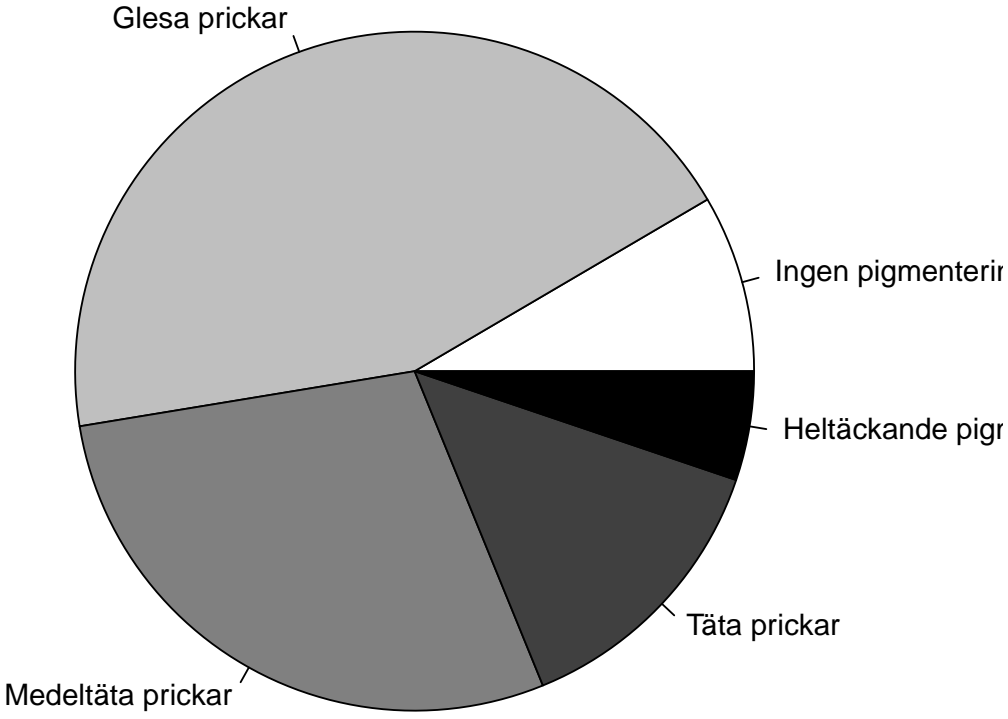
Pigmentering av 154 klumpfiskar observerades.

| Pigmentering | Antal | Frekvens |
|--------------------------|-------|----------|
| Ingen pigmentering | 13 | 8 % |
| Glesa prickar | 68 | 44 % |
| Medeltäta prickar | 44 | 29 % |
| Täta prickar | 21 | 14 % |
| Heltäckande pigmentering | 8 | 5 % |
| Summa | 154 | 100 % |

Stapeldiagram, ordinalskala



Cirkeldiagram, ordinalskala

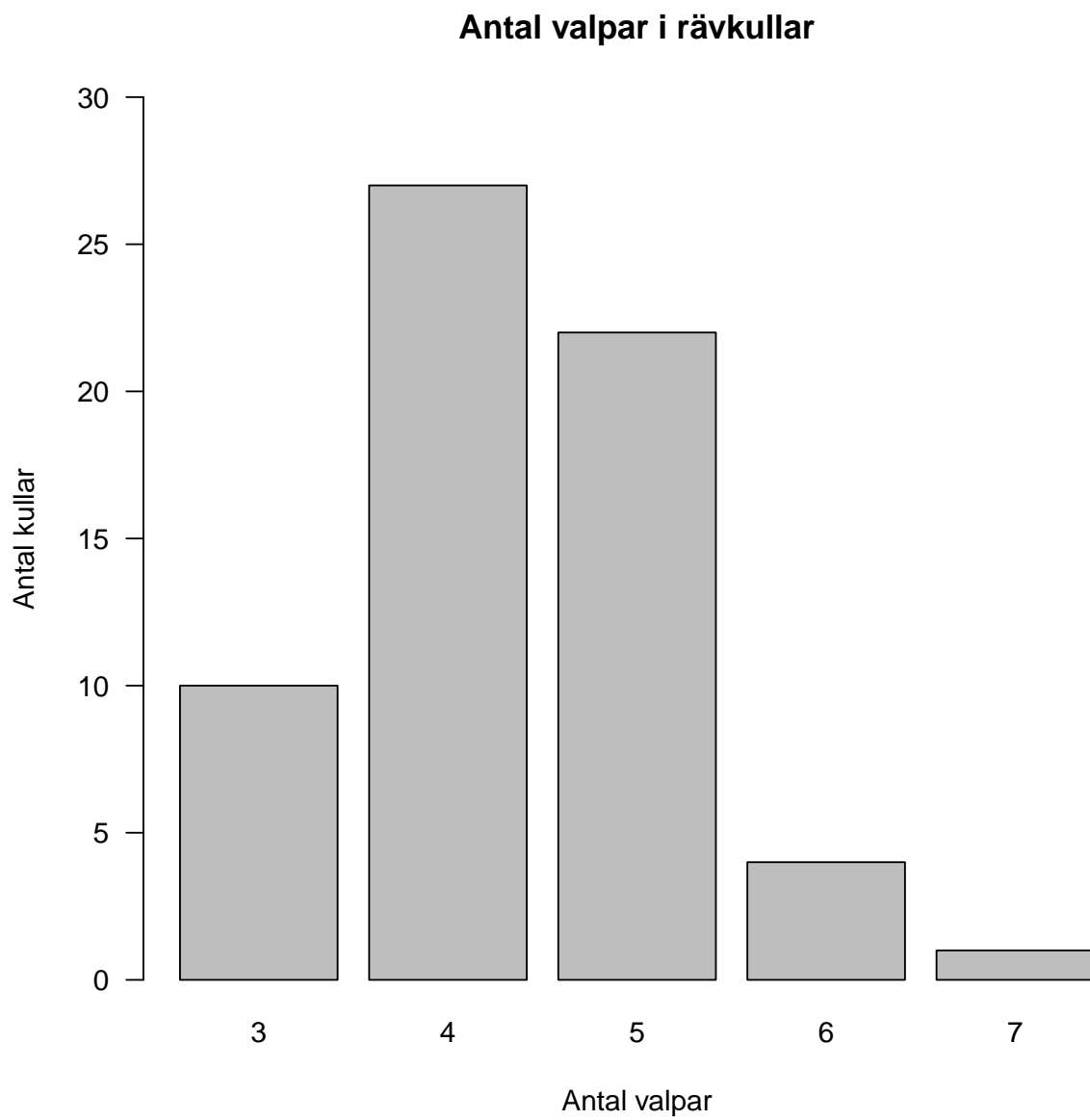


Frekvenstabell, diskret kvotskala

Antal valpar hos 64 rävkullar räknades.

| Antal valpar | Antal kullar | Frekvens |
|--------------|--------------|----------|
| 3 | 10 | 16 % |
| 4 | 27 | 42 % |
| 5 | 22 | 34 % |
| 6 | 4 | 6 % |
| 7 | 1 | 2 % |
| Summa | 64 | 100 % |

Stapeldiagram, diskret kvotskala



Stam-och-löv diagram, kontinuerlig kvot- skala

Fosforhalt hos 130 björkar

8.2 | 0699

8.3 | 034446666799

8.4 | 11266788889

8.5 | 045566788

8.6 | 011112345566678899

8.7 | 000011444555677777788

8.8 | 01122222334455566678899

8.9 | 0022345677777789

9.0 | 0122335788

9.1 | 02366

9.2 | 0

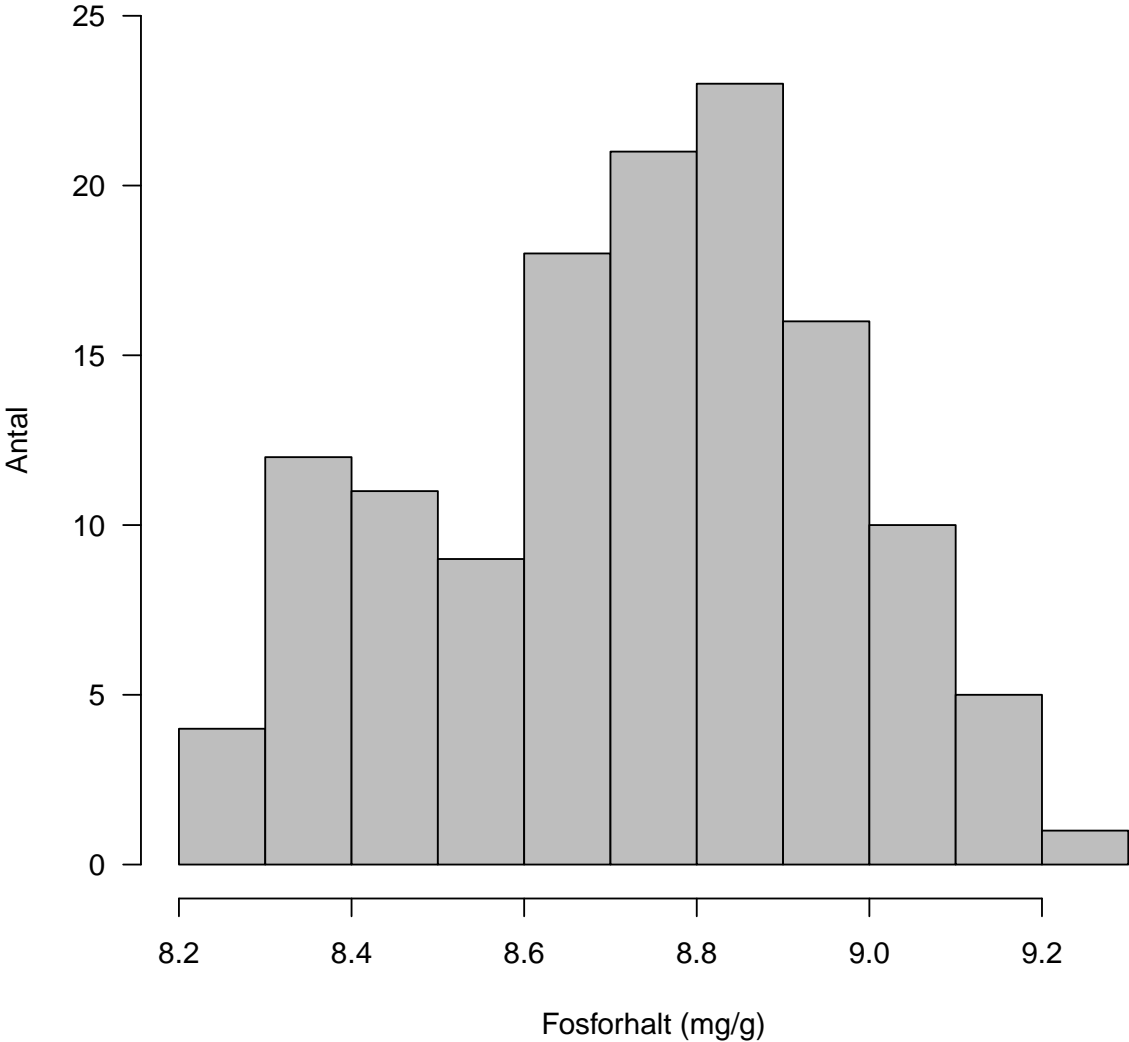
Frekvenstabell, kontinuerlig kvotskala

Fosforhalt hos 130 björkar.

| Fosforhalt | Antal | Frekvens |
|----------------------|-------|----------|
| $8.20 \leq x < 8.30$ | 4 | 3 % |
| $8.30 \leq x < 8.40$ | 12 | 9 % |
| $8.40 \leq x < 8.50$ | 11 | 8 % |
| $8.50 \leq x < 8.60$ | 9 | 7 % |
| $8.60 \leq x < 8.70$ | 18 | 14 % |
| $8.70 \leq x < 8.80$ | 21 | 16 % |
| $8.80 \leq x < 8.90$ | 23 | 18 % |
| $8.90 \leq x < 9.00$ | 16 | 12 % |
| $9.00 \leq x < 9.10$ | 10 | 8 % |
| $9.10 \leq x < 9.20$ | 5 | 4 % |
| $9.20 \leq x < 9.30$ | 1 | 1 % |
| Summa | 130 | 100 % |

Histogram, kontinuerlig kvotskala

Fosforhalt hos björk



Kumulativ frekvenstabell

| Fosforhalt | Antal | Kumulativt antal | Kumulativ frekvens |
|----------------------|-------|------------------|--------------------|
| $8.20 \leq x < 8.30$ | 4 | 4 | 3 % |
| $8.30 \leq x < 8.40$ | 12 | 16 | 12 % |
| $8.40 \leq x < 8.50$ | 11 | 27 | 21 % |
| $8.50 \leq x < 8.60$ | 9 | 36 | 28 % |
| $8.60 \leq x < 8.70$ | 18 | 54 | 42 % |
| $8.70 \leq x < 8.80$ | 21 | 75 | 58 % |
| $8.80 \leq x < 8.90$ | 23 | 98 | 75 % |
| $8.90 \leq x < 9.00$ | 16 | 114 | 88 % |
| $9.00 \leq x < 9.10$ | 10 | 124 | 95 % |
| $9.10 \leq x < 9.20$ | 5 | 129 | 99 % |
| $9.20 \leq x < 9.30$ | 1 | 130 | 100 % |

Summakurva

