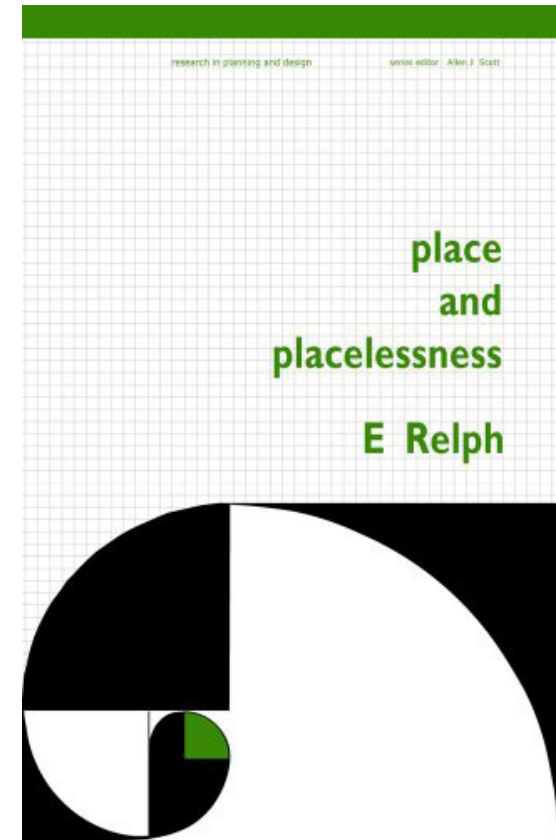


PLACE AND PLACELESSNESS


Edward Relph
Humanistic Geographer
Canada

Place and placelessness 1976



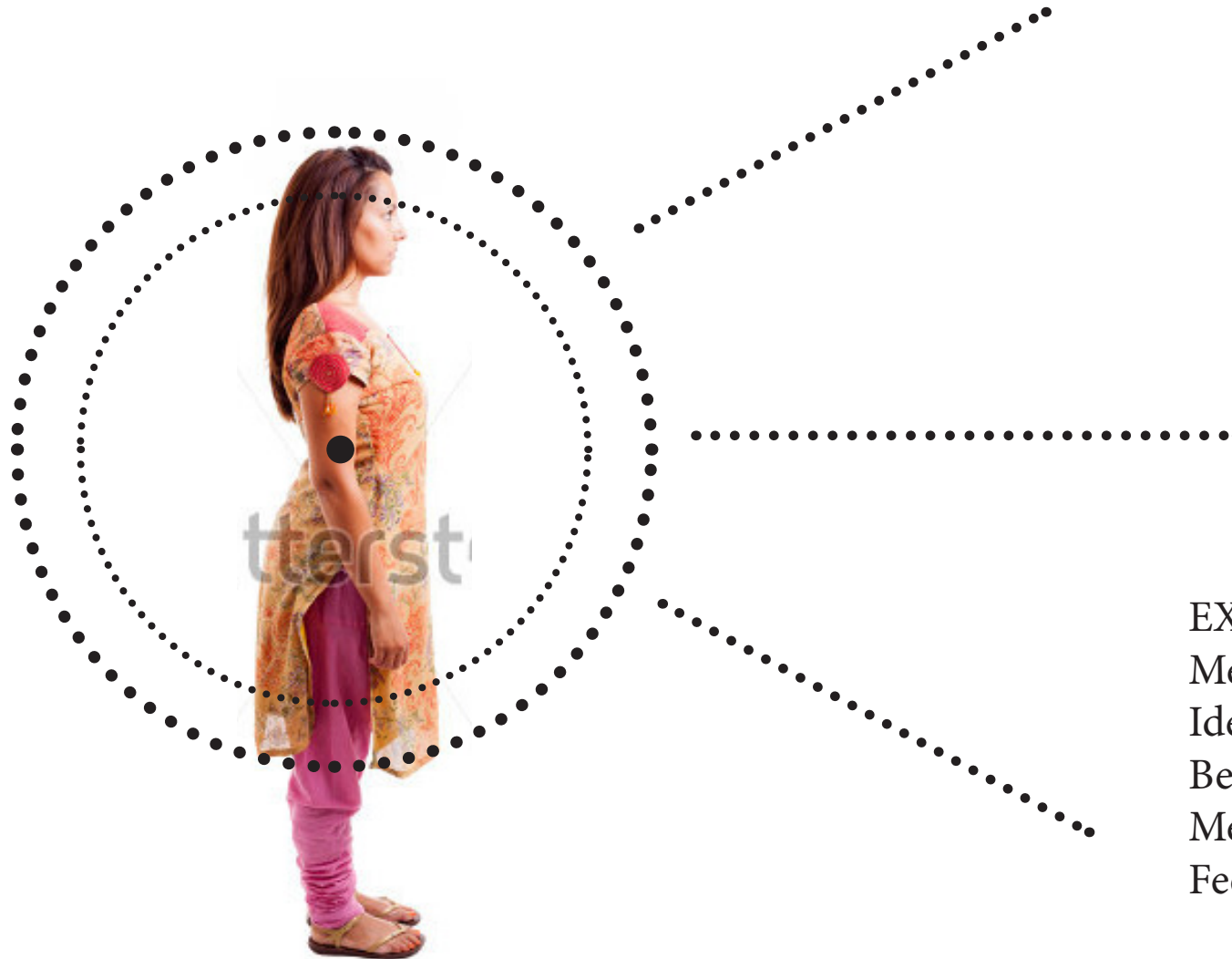
What is place?

The phenomenon of place

Deepen the knowledge about human experiences of world which build presupposes of the geographical field  forms the world. Like the idea of landscape form landscape.

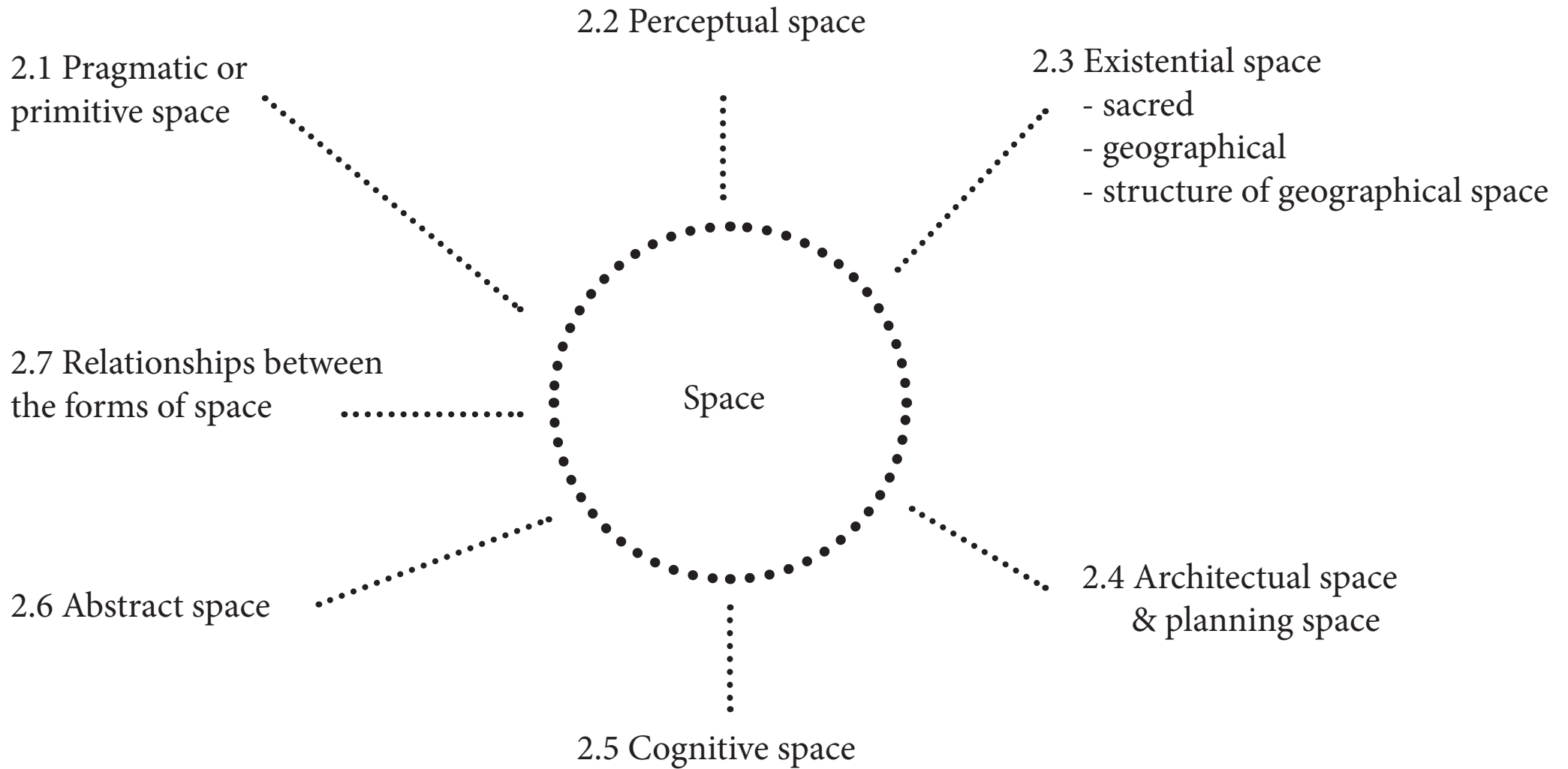
1. Place and space
2. Essence of place

What is place?
Relphs answer is....



EXPERIENCES
Meanings
Identity
Belonging
Memories
Feelings.....

1. Place and space - an interaction



Because such existential space is meaningful within one culture group does not mean that it is communicable to members of other cultures, at least not without some considerable effort of understanding on their part.

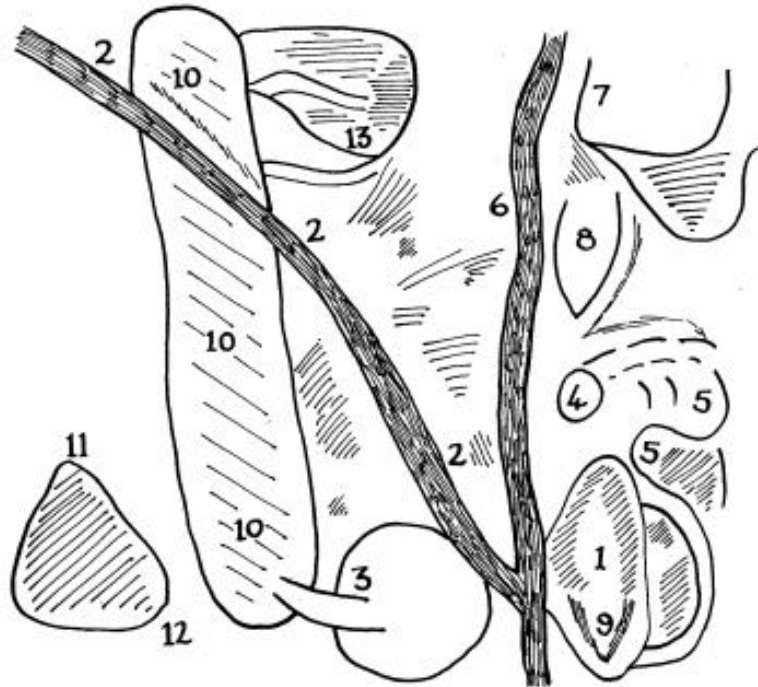


Figure 2.2. An Aboriginal map of the Gurudjmug Area (from Berndt and Berndt, 1970, p.56).

- Key:
1. Gabari Creek.
 2. Gabari Waterhole.
 3. Gunyiguyimi Waterhole.
 4. A *njalaidj* ceremony was held close to (2); here people were dancing.
 5. People from the north who came to the *njalaidj* ceremony now stand here as rocks.
 6. Namalaid, an orphan was here.
 7. The orphan's elder brother went up here and was turned into a rock.
 8. Fishing net used by the fishermen who came to the *njalaidj*.
 9. The elder brother's dog.
 10. Nabamuli Billabonz.

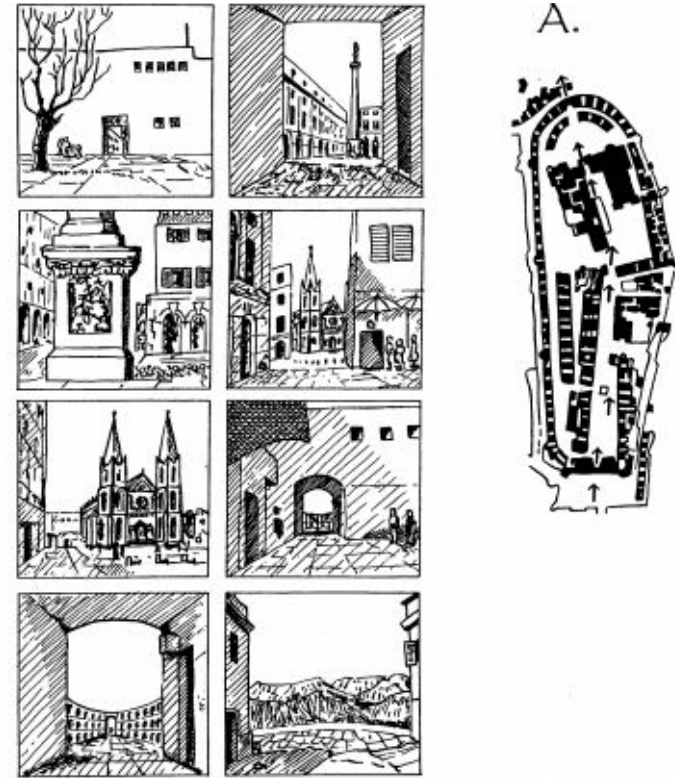
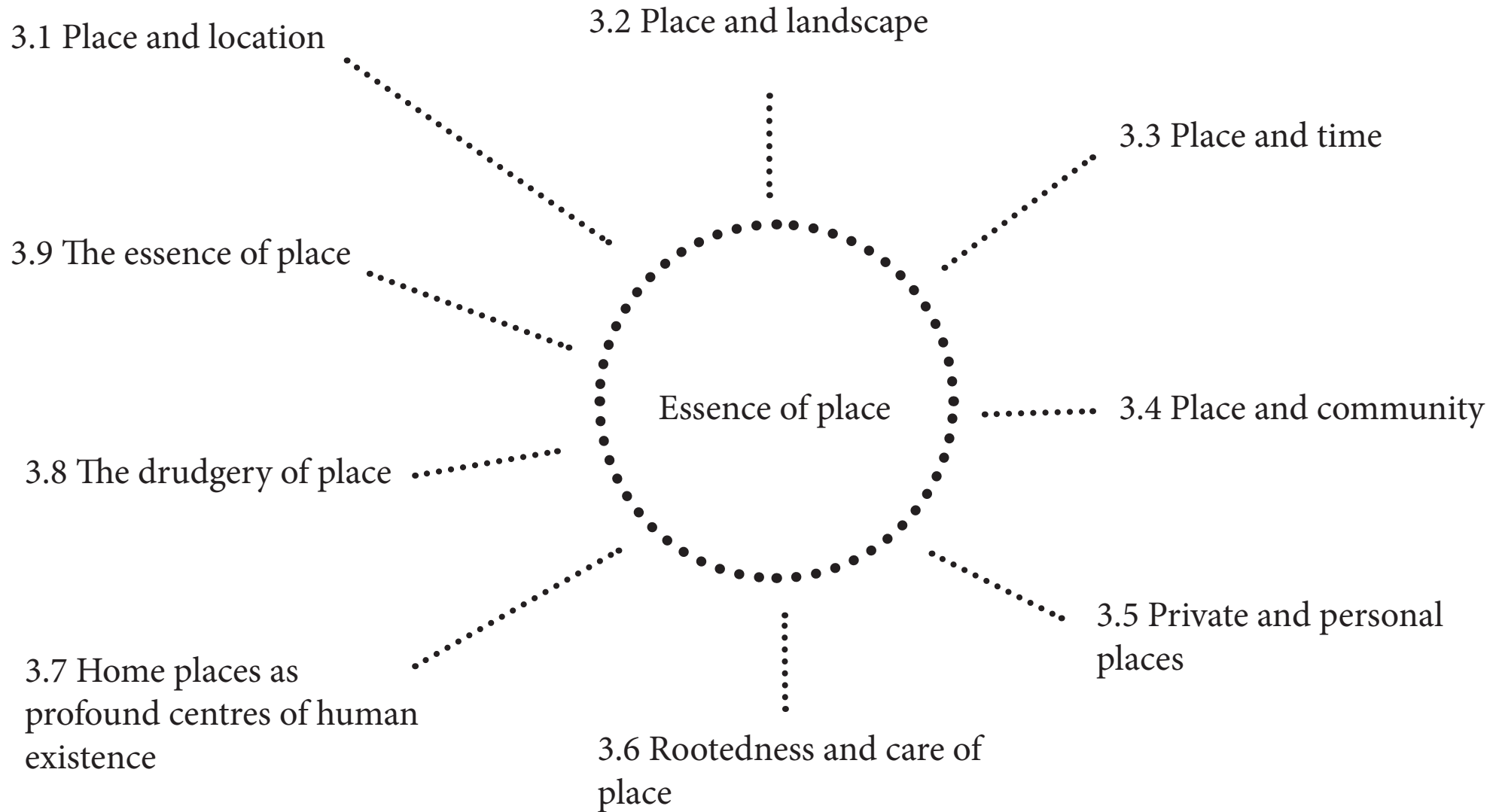


Figure 2.3. Two representations of existential space.
 (A) Existential space as experienced in serial vision and from the perspective of the person in the street (from Cullen, 1971, p.17).
 (B) The Boston image derived from street interviews. Existential space of the city

2.3 Existential space - sacred

2.3 Existential space - structure of geographical space

2. Essence of place





3.7 Home places as
profound centres of human existence



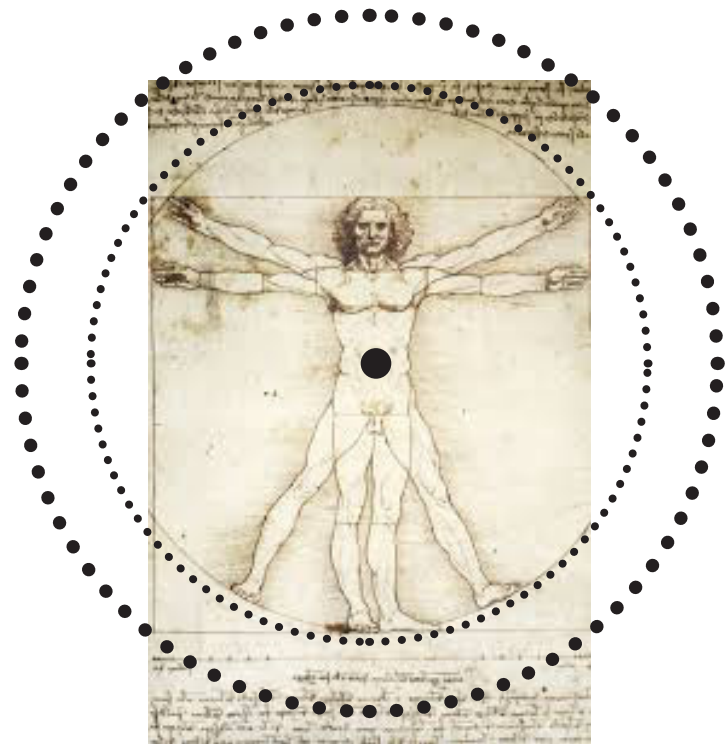
3.7 Home places as
profound centres of human existence
3.6 Rootedness and care of place
3.8 The drudgery of place

A deeper understanding of what place is!
The relation of human and place.

Place as centre in the human existence - orient ourselves
in a world of chaos

Knowledge of place is a simple fact of experience

Critic to modernistisc 2d planning - lack of dimensions
of experience



Questions

- How has our relation to space changed. Are we more rootless and mobile today ?
- Postmodern commercialization of place, how does it affect the individual experience ?
- Include individual experiences in planning situations - a 4 dimension. How ?