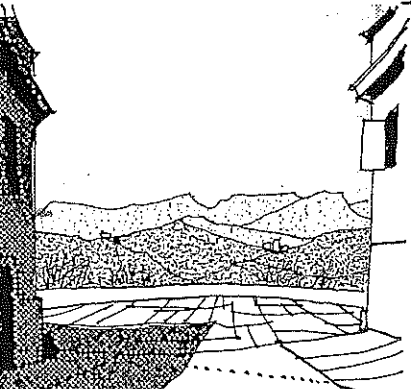
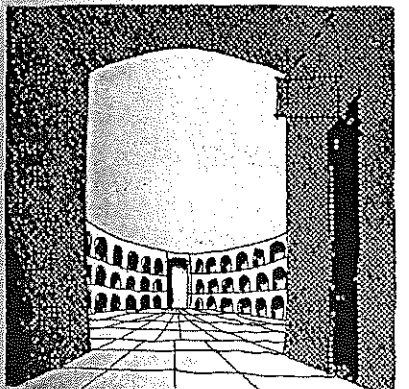
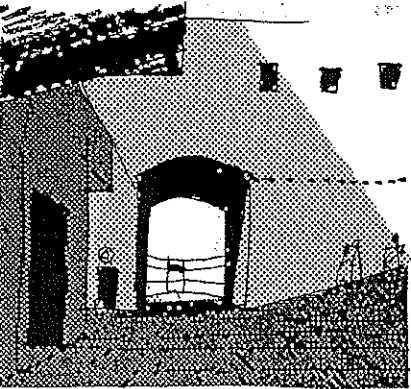
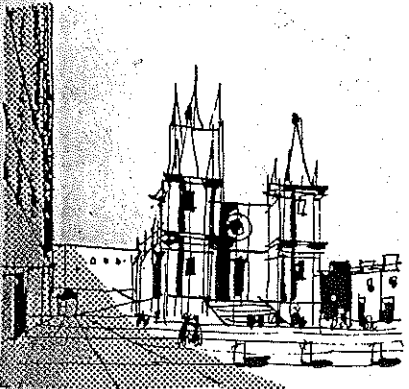
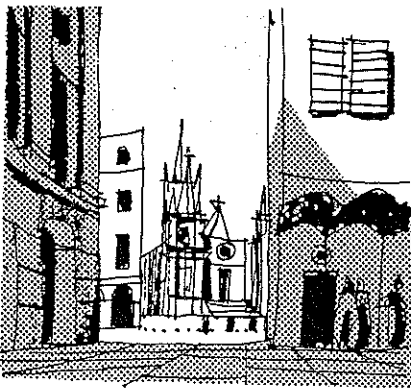
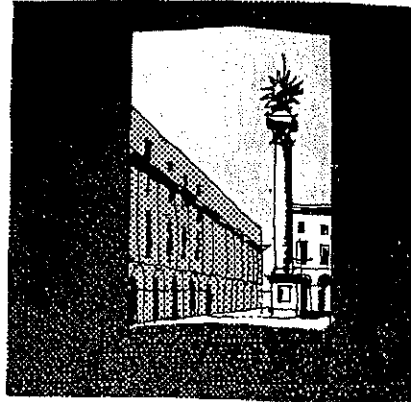
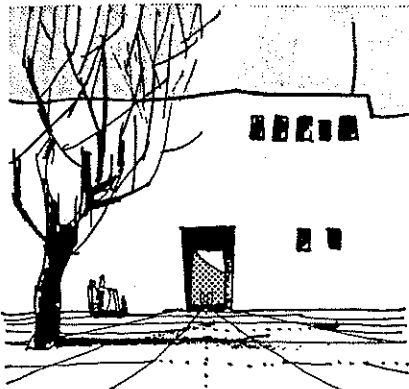


CASEBOOK: SERIAL VISION



To walk from one end of the plan to another, at a uniform pace, will provide a sequence of revelations which are suggested in the serial drawings opposite, reading from left to right. Each arrow on the plan represents a drawing. The even progress of travel is illuminated by a series of sudden contrasts and so an impact is made on the eye, bringing the plan to life (like nudging a man who is going to sleep in church). My drawings bear no relation to the place itself; I chose it because it seemed an evocative plan. Note that the slightest deviation in alignment and quite small variations in projections or setbacks on plan have a disproportionately powerful effect in the third dimension.

